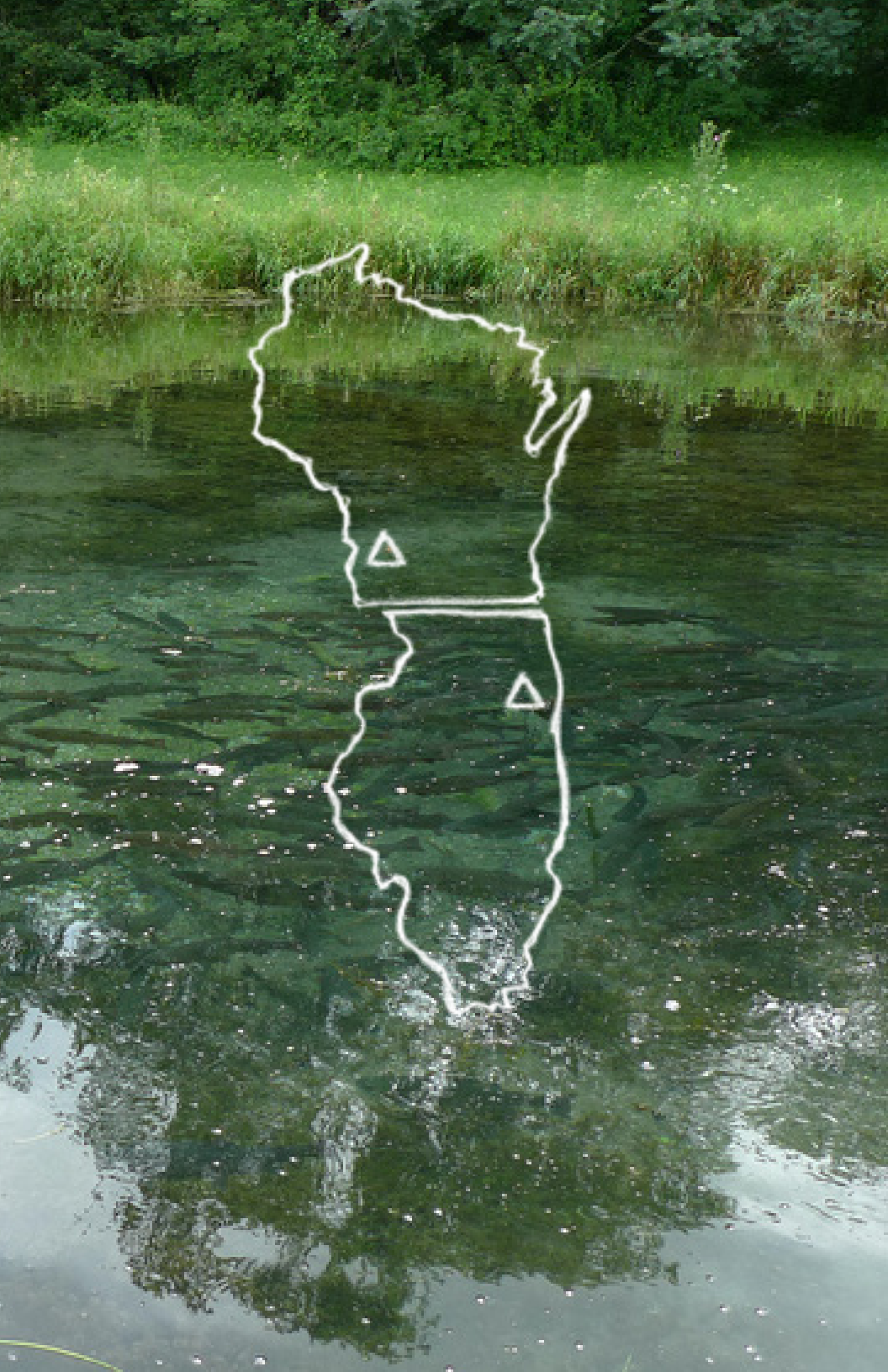


ACCRE





Every summer, 75 emerging artists gather at the ACRE residency program outside of rural Steuben, WI. Supported by ACRE's dedicated staff, artists interact with visiting luminaries, exchange skills, produce new work, and engage in transformative collaborations.



Session 1 **July 18 - 29**

Session 2 **August 1 - 12**

Session 3 **August 15 - 26**



# Artists' Cooperative Residency & Exhibitions

ONE SESSION (12 DAYS): \$550

TWO SESSIONS (26 DAYS): \$1100

DAY RATE: \$50/DAY

## FINANCIAL AID:

SCHOLARSHIPS AND WORK-STUDY POSITIONS ARE AVAILABLE.

ONE FULL SCHOLARSHIP PER SESSION IS AVAILABLE FOR BANDS OF 3-4 PEOPLE.

TWO-SESSION STAYS ARE AVAILABLE ONLY TO NON-US RESIDENTS

## ACRE INCLUDES:

- Twelve days of room & board, including comfortable sleeping accommodations and chef-prepared meals.
- Communal studio space and access to facilities including a wood shop, screen-printing studio, recording studio, audio/ visual+tech cabin, practice space for musicians.
- 1000 acres of Wisconsin's driftless region.
- Studio visits with a variety of established artists, curators and experienced educators.
- Workshops, lectures, concerts, reading groups, critiques and other programming throughout each session.
- Access to a network of peers, established artists, curators, critics, and gallerists.
- An opportunity for a solo, duo or group exhibition in Chicago throughout the rest of the year.
- Webspace on ACRE's digital flatfile, available for curators.
- Consideration for participation in art fairs and other opportunities.





ACCOM  
MODAT  
IONS



## Residents live together in a unique building made from salvaged materials.

Most residents stay in the sprawling Steuben Lodge, which houses around 40 people and contains a large central area that includes a library with wireless internet, breakfast area, staff office equipped with computers, printers and scanners for everyone's use, and a pirate radio station.

The lodge contains 12 two-story rooms that can sleep three at a time, each with its own bathroom and kitchenette. Each room opens onto a porch that can be used for outdoor studio space. Residents who prefer to share a bed with a friend or partner can stay in single-bed apartments in a

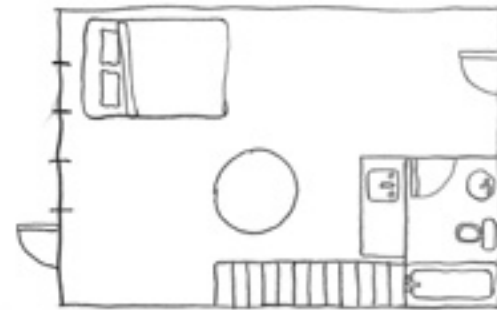
nearby building. Couples are welcome to come together and share sleeping accommodations. However, unless all work is collaboratively produced, each person should apply individually. To request a shared bed, just note your situation in the facility section of your application or contact us by email once you've submitted your application.

Unfortunately, Due to insurance reasons we cannot accommodate anyone under 18, including children of residents. Because of the animals already on the farm, the property owners cannot allow pets to attend.

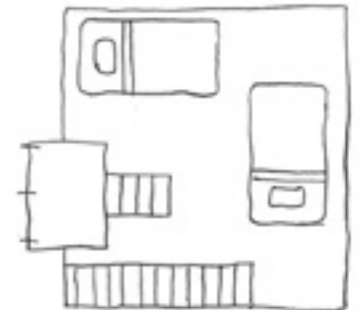




Lodge rooms house 3 residents each, and feature bathrooms & kitchenettes.



FIRST FLOOR



SECOND FLOOR



COUPLES STAY IN PRIVATE APARTMENTS





STUDIO  
SPACES





Spaces within the outdoor and indoor communal work areas are afforded to each resident.

A two-story studio cabin just outside the main lodge holds twelve work areas. Air conditioned and clean, this space is often occupied by folks working in 2D media, but is open to one and all. The open-air wood shop, and the adjacent 1,500 square foot covered outdoor space can be great places to set up work-spaces, especially if you'll be utilizing the wood shop or screen printing area.

The covered porches that wrap around the main lodge are set up with clean white walls and work tables, and can be directly accessed through each apartment in the lodge. Most apartments in the lodge have tables to work at and can be furnished with heavier-duty work tables upon request. These spaces are ideal for those wanting a more private work space.

Or you can set out into the sprawling grounds to find new places to be inspired.







WOOD  
SHOP



ACRE's woodshop is a 2000 square foot covered, outdoor area with a newly-poured concrete floor, new electric, and lots of work tables & tools.

It sits next to a gigantic lumber yard full of salvaged timbers and usable scraps from buildings demolished in Chicago and salvaged by Bob Samuelson, one of the owners of the farm. Many residents in the past have requested and been given access to this lumber (sometimes for a small fee), and have

made use of the extra-large timber-cutting tools that the farm retains. The wood shop staff also facilitates other sculptural processes, such as mold making and casting. At least one volunteer technician is always available to advise and assist with projects.





## WOODSHOP EQUIPMENT:

**drill press, table saws,  
band saw, miter saw, hand  
saw, circular saws, routers,  
grinders, belt sanders, disk  
sanders, air compressor,  
planer, lathe, cordless drills,  
wrenches, files, and chisels**

THIS IS A SIMPLIFIED LIST OF AVAILABLE TOOLS, IF YOU WOULD LIKE MORE SPECIFIC INFORMATION, PLEASE CONTACT US.



SCREEN  
PRINT  
ING





Screenprinting workshops and guided assistance from master printers are available to everyone.

Built in the summer of 2011, ACRE's screen-printing studio contains a dark room, exposure unit, vacuum table, dozens of screens, drying equipment, and more. Staffed by a master screen

printer at all times, the lab provides inks, emulsions, transparencies that will work with our printers, and other supplies to offer free to any resident that wishes to use them.



Residents who plan on using the screen-printing studio are encouraged to bring their own paper, fabric or material to print on, inks they know they will specifically want to work with or other specialty supplies. Access to scanners, computers and printers in

other areas of the farm will be provided for creating images to work with. As with other facilities, there are built-in training sessions for anyone who might be new or rusty to the basics of the screenprinting process.







RECORDING  
STUDIO



Bands, sound artists, and novices come through the recording studio to work with friendly, experienced engineers.



The residency's recording studio was also improved-upon in 2011, moving to a new space and taking on three full-time staff members to assist artists and musicians with their recording needs. ACRE provides not only recording

equipment and computers, but many instruments as well. Recording hours in the studio are available for anyone to sign up for, and are facilitated by an expert engineer.



## RECORDING STUDIO EQUIPMENT:

**Audio Technica 4033 microphone and shock mount, Samson CO2 pencil condenser pair, Digital voice recorders, ATR25 stereo condenser microphone, 79 Fender Super Twin amplifier, 67 Gibson melody maker, 60s Pearl drum kit, early 70s Turner instrument mics, oktava Mk-012 Condensor mic, later 80s Ev series drum mics, various sure mics, Alesis Ion Kurzweil K2000, 2 portable sony mini disc recorders with mountable handheld stereo mics, Event active studio monitors '71 sunn scepter amplifier, Avatar 2x12 bass cab, Sunn TC50 guitar amp combo 1x12, Digitech whammy 2nd gen, Electro harmonix memory man, american big muff pi, Crybaby , volume/wah with boost, Cellular automata video synthesizer, Global bass guitar, Epiphone les paul baritone guitar, various pedals and effects**

THIS IS A SIMPLIFIED LIST OF AVAILABLE EQUIPMENT, IF YOU WOULD LIKE MORE SPECIFIC INFORMATION, PLEASE CONTACT US.



## BAND CABIN:

We are excited to host 3-4 person bands and collaborative groups in the newly finished river cabin located about a half-mile from the main lodge right on the banks of the Kickapoo River.

This private space with a bathroom and kitchenette will act as the sleeping accommodations and practice space for one band per session.





A/V +  
TECH



The computer lab has all the software you'll need to edit photo, sound & video.



A super-fast and custom-built mac/windows 2012/linux-capable computer with all sorts of video editing and 3D rendering tools is available for residents who sign up to use it. A small computer lab that is connected to the Internet is also available. A number of computers

are available with a variety of software that can suit artists' needs including Adobe softwares, Ableton, and various other audio editing softwares to experiment with tracks made in the recording studio and other audio files.





The Art & Technology Lab is a resource for both tech-heads and newbs.

ACRE's space for electronics, robotics and 3D prototyping, Art/Tech holds workshops on a variety of subjects that are designed to introduce newbies to electronics. For those with more experience, we try to provide a wide array of tools and equipment and can offer assistance with all kinds of projects. In addition to the things you'd expect to find in any general

purpose electronics lab, some unique capabilities of our space are: radio frequency work (AM or FM transmitters, etc.), the possibility to work with vacuum tubes, and power electronics for various types of lighting. We stock all the common electronic components like resistors, capacitors, discrete transistors and commonly-used ICs.

## A/V + TECH CABIN EQUIPMENT:

**soldering irons, circuit-board prototyping tools, digital multimeters, LCR meter, analog oscilloscope (100 MHz), digital storage oscilloscope (50 MHz), arbitrary waveform generator (25 MHz), logic analyzer (75 MHz), vector network analyzer (60 MHz), RF power meter (125 MHz), power supply (500 V). We also have a 3D printer, the Reprap Huxley, which can print objects up to 5.5" x 5.5" x 4.3" in either ABS or PLA plastic (various colors of plastic can be ordered; contact us if you would like to arrange for this)**





PROGRAM  
MING





Each year we invite several mid-career and established artists and thinkers to come and conduct studio visits, give lectures, offer workshops, organize intimate reading groups, lead excursions into neighboring areas, and stage other, more experimental programming. Each visiting artist comes for two to five days, and there are up to four at a given time.



Residents & staff also share skills with each other via informal workshops.



Visiting bands & performers come through on the weekends to play concerts & interact with the residency community.



As visiting artists are confirmed in the lead-up to the residency an updated list can be found on ACRE's website. At the beginning of each session a packet

of information will be provided to each resident with a programming schedule, visiting artist bios, and procedures for signing up for studio visits.





KITCHEN





Scattered throughout the grounds for most of the day, all residents and staff come together for exceptional meals and conversations.

Breakfast is provided each morning in the lodges, available from 8-10am, continental style. Residents eat lunches and dinners communally in a large indoor/outdoor dining hall/kitchen. Prepared by a large team of chefs

and assistants, each meal is prepared from locally-sourced meats, veggies, and dairy. Options for vegans and vegetarians are always available, and food is prepared specially for those with other dietary restrictions.





## A NOTE FROM OUR CHEFS:

We hope to make food a unique and integral aspect of the residency experience. We are a volunteer-artist-run kitchen and strive to provide an interesting, healthy and diverse menu crafted from local, seasonal and sustainable foods. While part of our mission is to use consideration in all aspects of our sourcing, buying, and recipe selection we also work toward developing a greater relationship between our artists and the fascinating subject of food. As our kitchen grows we are also incorporating exploratory programming offering our residents the opportunity to experience historical, intellectual, problematic, artistic and strange aspects of eating.

Each year the ACRE kitchen staff carefully crafts a menu to accommodate vegans, vegetarians, carnivores and gluten allergies while showcasing the bountiful seasonal produce, cheese

and meats found in the Driftless Region of Southwest Wisconsin. Meals range from truffle pea soup to bahn mi sandwiches, orange chipotle glazed shortribs and beet falafal to coconut-lime potatoes.

Most food at ACRE is in fact sourced locally from providers with whom the kitchen staff has developed relationships and are proven to use sustainable and organic practices. Our pork and chicken products are animal welfare-certified, the free-range beef grazes right on the land where ACRE residents live and work and we grow most of the herbs we use ourselves! We also try to eliminate processed, packaged products and big box shopping as much as possible making our own pizza dough, pie crusts, stocks, seitan, dressing and many breads ourselves.

Supporting the local economy and reducing our carbon footprint is an important part of how our kitchen is structured but we are also interested in bringing awareness to the many nuances of eating. We strive through our menu construction to make sure the food is delicious but also interesting and varied allowing residents to enjoy surprising new flavors and foods.

As artists who are interested in food, we try to apply aspects of artistic pursuit into our menus and integrate some of our own conceptual interests by curating an experience of exploration, appreciation and learning through workshops, lectures, tastings, panel discussions and special events. In 2011 our visiting artists lead groups on a foraging hike to find wild watercress, chickweed and dock before working with kitchen staff to transform them into pesto, cheese-

stuffed lillies and salad. Residents got to learn about offal meats, making pate and sampling heart skewers, duck tongues and goat testicles. There was a panel discussion between three very different food providers we work with; an Amish farmer, a sustainable rancher and a buyer for the food co-op about food/farming policy, and one lovely afternoon artists paraded through a cow-pasture to picnic under a tree sipping micro-brews paired with Wisconsin artisan cheeses and fruits, listening to an expert talk about the evolution of both cheese and beer and why they go together so well.

The ACRE kitchen is trying to continually find new ways to engage residents and staff in the dialogue related to food; questioning and considering consumption, presentation, preparation and the greater impact and issues related to its nuanced history.



YEAR  
ROUND  
SUPPORT





Each resident is offered an exhibition opportunity in Chicago. These include solo shows, two-person shows, and curated group shows.

These shows are held at ACRE's gallery in the Pilsen neighborhood of Chicago or at one of ACRE's partner galleries. Each show at ACRE Projects lasts two weeks and can be used for a typical art exhibition or any project, performance, gathering, lecture or other experimental

event. Residents participating in duo shows are either paired by a curator or can propose their own pairing at the end of the summer. All duo show participants will have curator support including studio visits and assistance with show text.

ACRE's partner galleries, all respected Chicago alternative spaces, invite dozens of residents each year to show with them.

The list of partner galleries grows and changes each year. In the past they have included such spaces as Roxaboxen, New Capital, Co-Prosperity Sphere, Roots + Culture, Heaven Gallery, Johalla Projects, Plains Project, ADDS DONNA, and LVL3. Partner galleries choose artists they would like to work with from their

ACRE applications and determine the date and length of the show as well as whether it will be a solo or group show. Once the partner galleries have chosen the artists they want to work with, they will communicate directly with the artist in regards to planning the show. ACRE handles the show's publicity, and the residents handle the install.







In addition to exhibitions in Chicago, residents have the opportunity to join ACRE at various art fairs and receive webspace.

In the past ACRE has participated in the NEXT and MDW fairs in Chicago and is planning to attend fairs outside of Chicago in the coming years. Residents will get user-friendly web space to upload work samples, information, writing or other work onto ACRE's online flatfile. This is a space

that ACRE uses to direct curators and critics to, and one that the artists can use either experimentally or as a website proper. ACRE is constantly working with other institutions and organizations to create opportunities for our artists.





Applications are due April 20th  
Apply online at [acrresidency.org](http://acrresidency.org)



